



STATEC BINDER

highly efficient bagging and palletizing solutions

system-T

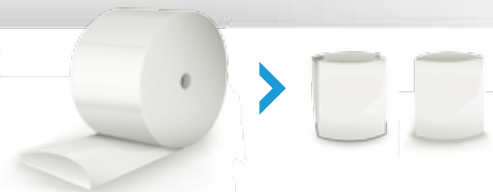
Form, fill and seal packaging machine



up to

2400

bags per hour



- ✓ FFS packaging machine from tubular PE
- ✓ Produces pillow bags and gusseted bags
- ✓ Compact design
- ✓ Optionally mounted on moving platform
- ✓ Highest corrosion protection level
- ✓ CE certified
- ✓ High energy efficiency



The automatic FFS packaging machines model System-T combines the high quality of packaging in a tubular PE bag with an high production capacity.

These characteristics make the packaging machines ideal to be used in several fields as Petrochemical, Fertilizers, Building, Mills, Animal food, Food

Different available models from System-T are the ideal choice for high/average/low production capacities.

Each version is available in four different material specifications, depending on the "aggressiveness" of the product to be packed.

All the packaging machines, including the low production speed ones, are based on the three different working stations principle: bag forming unit, bag filling unit, bag sealing unit.

The important advantage of this principle is that three bags are always being produced in the same time; thus the cycle duration of each function is optimized granting, also with high production speeds, the right time for the sealing operations,

for their cooling and for the bag filling operations.

While designing these packaging machines, a particular attention was given to the optimization of the maintenance times and costs, intervening on several factors.

A wide range of optional accessories allows to satisfy any production requirement:

Hydraulic charging for the reel unwind unit, Corner Sealers, Film Gusseting Unit, Bag mouth cleaning system, Self-cleaning filter, Deaeration in the bag, Handle forming device, Thermal printer and Mobile platform.

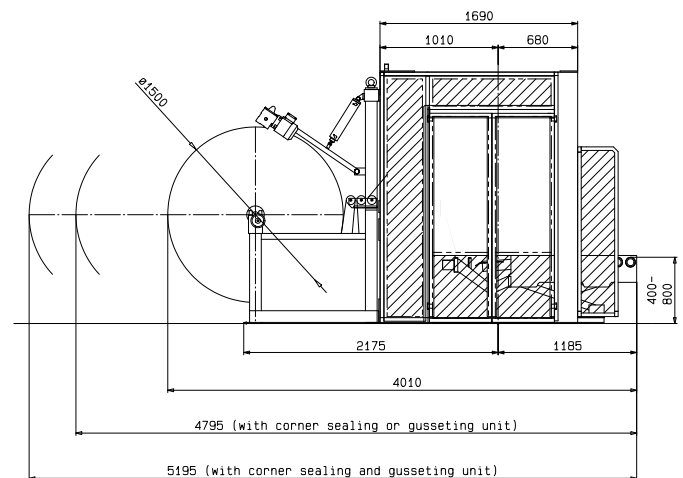


STATEC BINDER

highly efficient bagging and palletizing solutions

system-T

Form, fill and seal packaging machine



Operating range	system-T	
Bag length	500 - 900 mm	500 - 900 mm
Bag width	320 - 480 mm	320 - 480 mm
Distance between side gussets	max. 260 mm	max. 260 mm
Film thickness	95 - 220 µm	95 - 220 µm
Film roll diameter	max. 1500 mm	max. 1500 mm
Core diameter	150 mm	150 mm
Design capacity		
Version L	up to 1600 bags/h	up to 600 bags/h
Version M	up to 1900 bags/h	up to 900 bags/h
Version H	up to 2400 bags/h	up to 1200 bags/h
Machine dimensions		
Length	4200 mm	4000 mm
Width	1500 mm	1500 mm
Height	2200 mm	2100 mm
Energy requirements (in standard configuration)		
Installed load	18 kW	16 kW
Compressed air (6 barG)	176 - 220 Nm ³ /h	75 - 150 Nm ³ /h
Aspiration	900 Nm ³ /h	900 Nm ³ /h